

KEYSTONE

SEASONS

SECTOR 77, GURUGRAM

THERE'S A VOICE
CALLING OUT TO YOU

*Asking you to breathe better,
think better, sleep better,
and just live better.*



KEYSTONE
SEASONS
THE VOICE OF WELLNESS

Disclaimers: All information, images and visuals, drawings, plans or sketches shown in this brochure are only an architect's impression, for representational/illustrative purposes only and not to scale. The Promoter is not liable/ required to provide any interior works, furniture, items, electronics goods, amenities, accessories, etc, as displayed herein as the same do not form part of the specifications or deliverables being offered by the Promoter and the same shown herein is only for the purpose of illustrating/indicating a possible layout. Nothing contained herein intends to constitute a legal offer and does not form part of any legally binding agreement and/or commitment of any nature. The Promoter endeavours to keep the information up to date and correct, however, makes no representation or warranty for the accuracy or completeness of the information.

Recipients/ viewers are advised to exercise their discretion in relying on the information shown/ provided and are requested to verify all the details, including area, amenities, services, terms of sales and payments and other relevant terms independently with the Sales Team/ Promoter, have a thorough understanding of the same and take appropriate advice before concluding any decision for buying any Unit(s) in the Project. All dimensions mentioned in the drawings may vary/differ as compared to original at site. All specifications and amenities mentioned herein are actual specifications, amenities and facilities provided by the Company as per approved plans. **Specifications given are as filed with HRERA, Gurugram. The extent/ number/variety of the equipment/appliances are tentative and liable to change at sole discretion of the Promoter and shall be as per applicable law. Some of the features shown are optional. *Taxes and statutory charges extra as applicable and terms and conditions apply.

We listened closer,
we looked deeper,
*so you could
live happier.*



M I N D

B O D Y

S O U L

We believe your home should be a place that lets you thrive in the journey called life. That's why we created Keystone Seasons.

From the first sketches at the concept stage, to the finishing touches at the final execution, we focused on creating a world that prioritised your well-being.

We factored in the environment, weather, light, ventilation and brought them all in harmony.

We studied every space, both indoor and outdoor, microscopically covering aspects around accessibility, security and privacy.

We looked not just at what was available at present, but at what would be necessary in the future to sustain our world.

We asked ourselves countless questions to address one crucial point. Your well-being. It's only then that we brought to life this landmark that you could call home.



Soaring towards the sky, the apartments overlook an expanse of the Aravali hills, a green belt and an elevated stretch of the expressway.

Seasons by the Numbers

01/ **4 Acres** (APPROXIMATELY)

02/ **2 Exclusive Towers**

03/ **175 Apartments**

04/ **3 & 4 BHKs**

05/ **100% Open Areas** (AT DIFFERENT LEVELS)

06/ **90% Vehicle-free Zones**

Keystone Seasons—

In Pursuit of Wellness

01



Physical

Care for your body

- Terrace Walking Track
- Kids Play Area
- Gym
- Yoga Room
- Tennis Court
- Half Basketball Court
- Pool with 6 Whirlpools
- Salon
- Wet Spa

02



Mental

Connect more with nature

- Ample Sunlight
- Spacious Balconies
- Terrace Lounge
- Gardens
- Amphitheatre
- Fountain

03



Social

Engage with your community

- Adaptable Community Areas for All Seasons
- Clubhouse
- Terrace Lounge
- Various Sit-out Areas
- Festival Lawns
- Pool

04



Spiritual

Connect with your soul

- Vedic Temple

05



Environmental

Embrace sustainability

- IGBC Gold Rating
- Rainwater Harvesting
- Solar Energy
- Green Spaces
- Access to 1 EV Charging Point per Apartment
- Efficient Garbage Disposal Systems
- Reduced Pollutants and CO₂ Emissions

06



Economic

Reduce expenses on energy

- Lower Energy Cost due to Green Building norms
- Solar Power
- Naturally Ventilated Lift Lobbies

Feel like you're alone,
but never lonely.

*Homes that promise Low Density
and High Solidarity.*



Approximately 4 Acres. Only 175 Homes.

The limited apartments at this prime property offer an intimate sense of privacy and help foster a strong community spirit.



Aerial view, Keystone Seasons, Sector 77, Gurugram.

Not just an address, A testament to comfort, convenience and well-being.

Nestled in the tranquil yet dynamic Sector 77 near Hyatt Regency in Gurgaon, Keystone Seasons stands as a beacon of luxurious and sustainable living amidst the urban sprawl.

With reduced commute times, a boost to mental and physical well-being and access to everything your life needs, this haven of wellness epitomizes the pinnacle of modern urban living.



CONNECTIVITY

POPULAR SPOTS	Jaipur Highway (NH-8)	1 min
	SPR / Dwarka Expressway	3 mins
	DLF Cyber-city	25 mins
	Airport	40 mins
HOSPITALS	Medanta, Rockland Multi-specialty	10 mins
	Artemis, Fortis, Max	20 mins
	Apollo Cradle, Miracles	5 mins
HOTELS	Hyatt Regency	3 mins
	ITC Grand Bharat	10 mins
GOLF COURSES	ITC Classic	21 mins
	Karma LakeLands	11 mins
	Golden Green	18 mins
SCHOOLS/ COLLEGES	Suncity School, St. Xavier's,	15-20 mins
	GD Goenka, Pathways, Heritage	



Disclaimer: Maps not to scale. The roads and access routes depicted in this brochure are planned and intended to be developed by the relevant government authorities. While we have presented the proposed layouts and access points based on the current urban development plans, the actual construction and completion timelines are subject to the decisions and schedules of these government bodies. Prospective buyers are advised to independently verify the current status and future plans with the appropriate governmental departments.

Revolutionary design *to help you evolve.*



Keystone Seasons is a carefully planned luxury habitat, distinguished by its innovative spatial organization and commitment to sustainability

Strategically positioned on the south-western fringe, its twin towers gaze over an expansive landscaped garden to the northeast, and is governed by Vastu principles that promote positive energy flow and well-being.

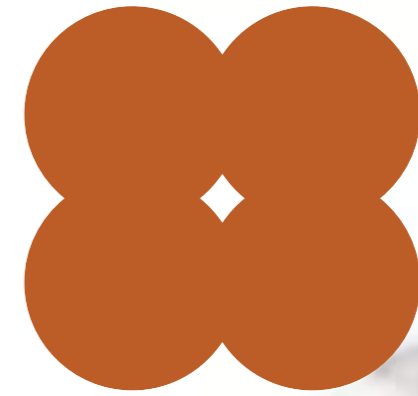
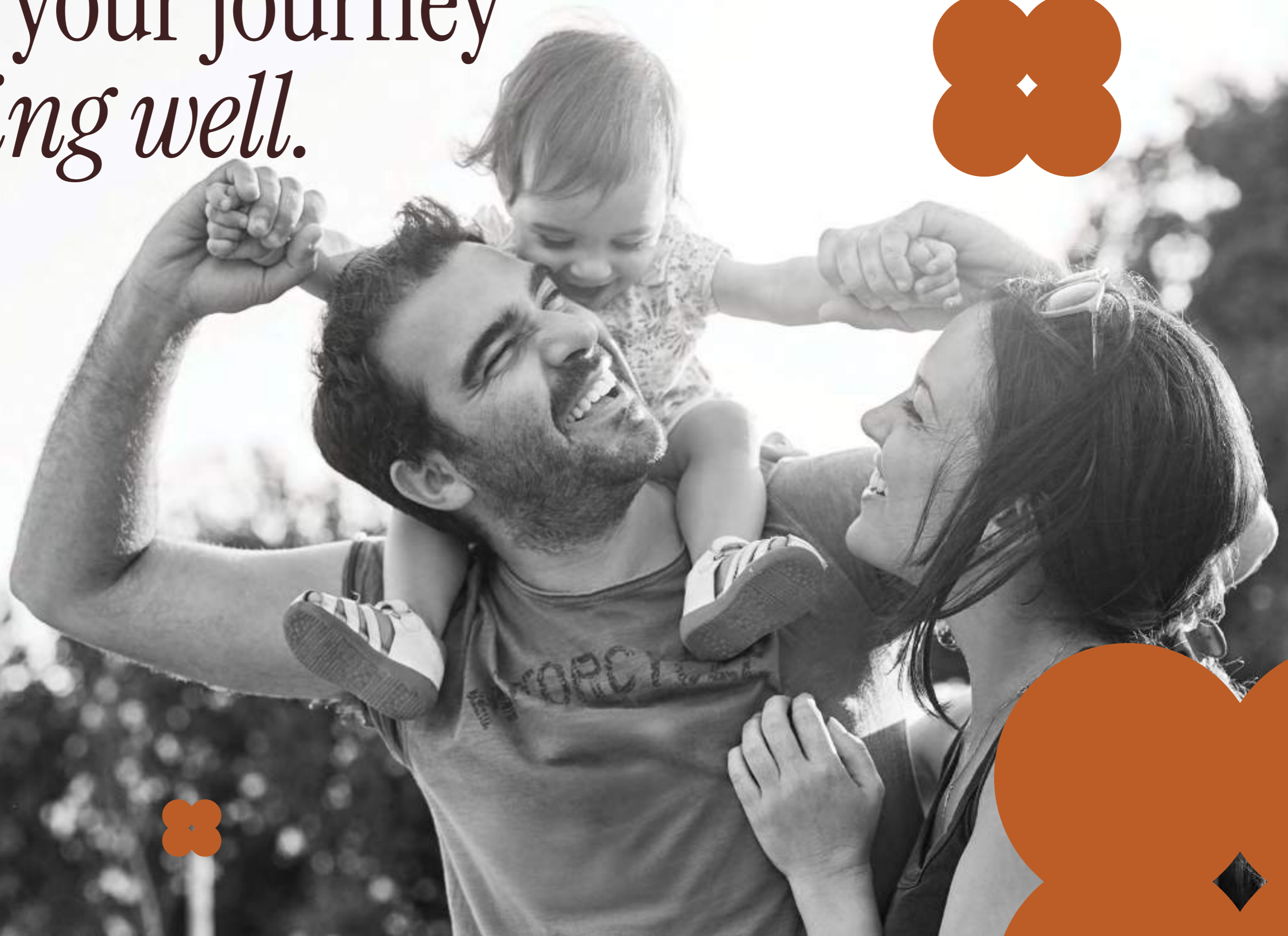
At the heart of this majestic property lies a garden that is instrumental in facilitating rainwater percolation, thereby significantly reducing the urban heat island effect and fostering an improved microclimate within the development.

Integrating seamlessly with the landscape, is the Clubhouse that allows greenery to envelope its structure, highlighting the unity between built form and the natural topography.

Characterized by simplicity, clean lines and geometric clarity across the architecture, landscape and interior designs, Keystone Seasons mimics a cocooned environment that's ideal for human development.

ARRIVAL EXPERIENCE

Begin your journey *of living well.*



See only *the best* *there is to see.*



Unmissable Grand Entrance. Discreet Service Entrance.

Savour the first kiss of luxury, as a grand gateway welcomes both residents and guests, leading them into the heart of the property

While a service entrance tucked away near the clubhouse ensures operational tasks are conducted seamlessly without disturbing the surroundings. This entry also serves as a distinguished access for exclusive events at the clubhouse.

raises

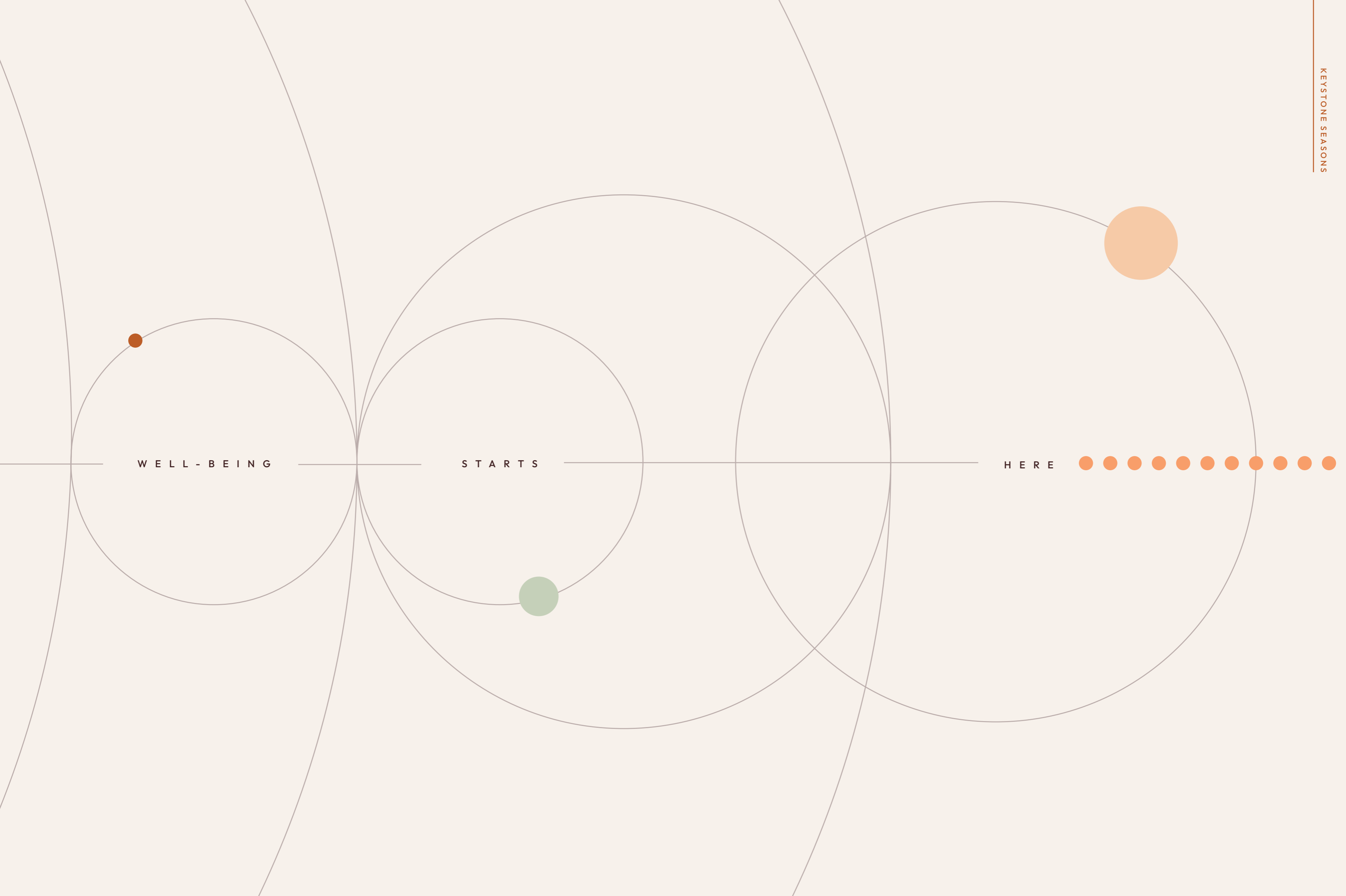
A drop-off that

expectations.



Dedicated drop-off plaza for residents and visitors

A singular drop-off and pick-up point, allows for smooth movement of vehicles while an opulent double-heighted foyer warmly welcomes everyone with open arms.



WELL - BEING

STARTS

HERE

An Elegant Foyer

Expansive Double-height Lobby



Open and exquisitely designed, the entrance lobby is flanked by wide windows and is crafted to make a statement of luxury.

Arrival experience leading to the two towers.



Enjoy exclusive access to lifts that are reserved for residents and guests.

Deliveries and cargo are kept separate with a dedicated lift, to avoid inconvenience and crowding.



An *Uplifting* Elevator Lobby

Expansive Lift Lobby

Thoughtful amenities for everyone.

100% Basement Parking.
Access to 1 EV Charging Point per Apartment.

With two levels of basement parking, every home enjoys 100% underground parking.

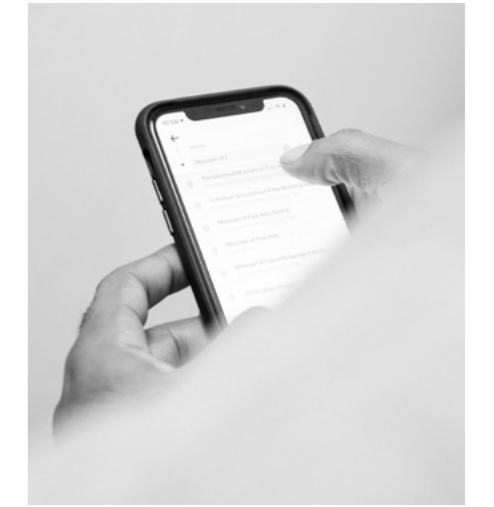
Pet Wash Station



Rest Areas for Driving Staff



Boosters for Phone Signal



Car Wash Bay



Garbage Disposal



Ironing Area



Enhanced Security



For the first time, personalize your apartment with distinct interior themes inspired by the four seasons.



S U M M E R

A P A R T M E N T S

S P R I N G

A U T U M N

Let your favourite season linger for longer with carefully selected palettes that best capture the essence and colours of the four seasons.

Look on the inside, *never only outside.*

Choice of four interior themes inspired by the seasons.

S U M M E R

S P R I N G

A U T U M N

W I N T E R

Look on the inside *never only outside*

Choice of four interior themes inspired by the

SUMMER *Theme*

Sun-kissed grass.
Varying shades to enhance
the clear blue skies.

A season of calm
and harmony,
this palette captures
unbridled joy.



S P R I N G

A U T U M N

W I N T E R

SPRING Theme

The soft pastel hues
of flowers blooming.
Vibrant, fresh green foliage.
Hints of Cherry Blossoms.

A time for renewal and growth, this
palette evokes a sense of peace.



Look on the *never only!*

Choice of four interior themes

AUTUMN

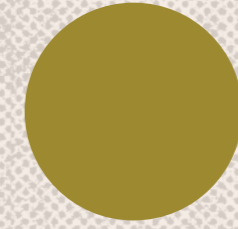
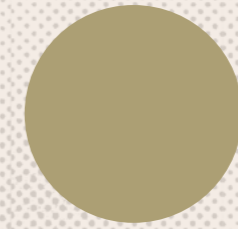
WINTER

AUTUMN

Theme

The aesthetic fall of vividly coloured leaves.
Deep reds. Warm oranges.
Golden Yellows. Rich Browns.

A period of letting go,
this palette creates the perfect
canvas for introspection.



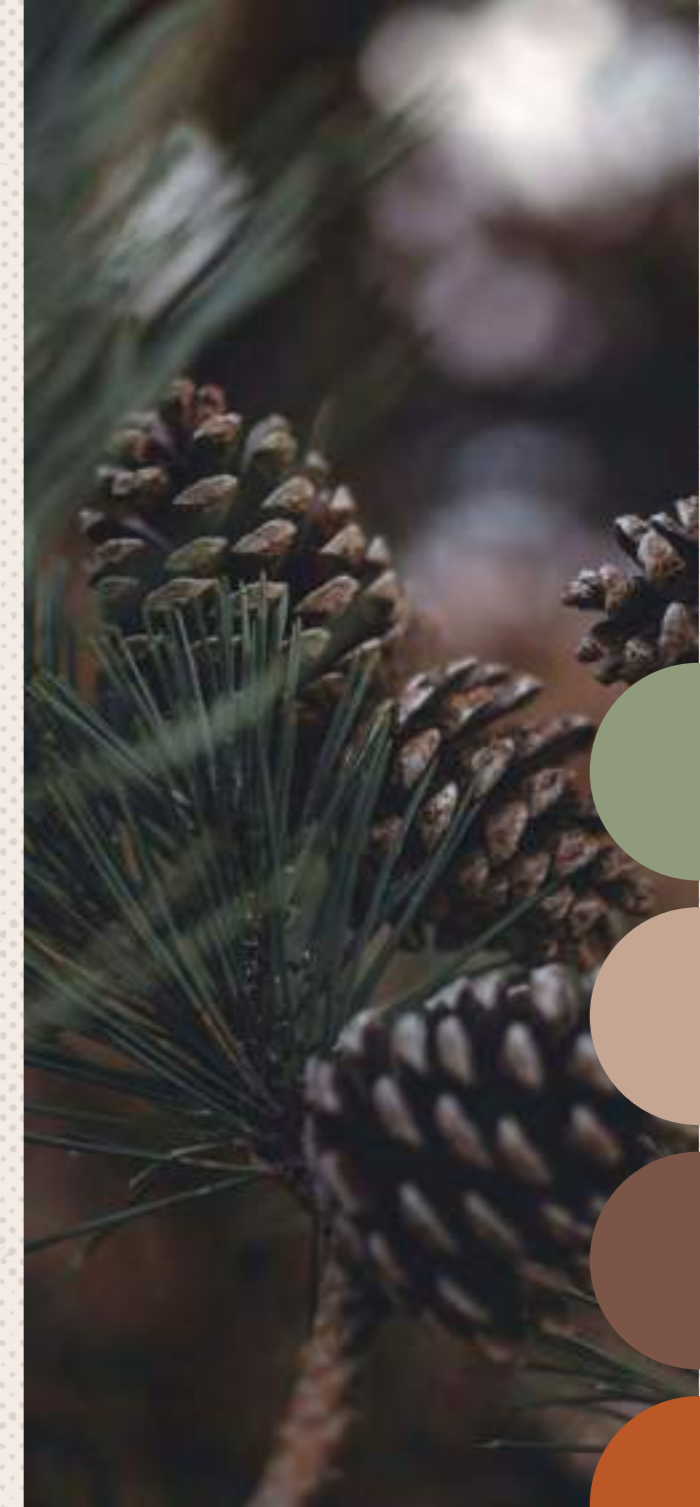
Look
new
Choice of t

WINTER

Theme

Magical winter landscapes.
Grays kissed by earthy neutral hues.
Juxtaposed with wood.

A postcard of a dreamy life,
This palette cleverly unites cool and
warm tones.



*Take
a breath of*

fresh air

Air purification systems at home,
let you enjoy better air quality
that's within WHO safe limits.*

*Optional facility

*Manufacturer's Warranty apply, subject to operations and maintenance as per prescribed Guidelines

A Foyer that feels
like *a warm embrace.*



Feel like royalty the moment you enter home as the high ceilings create the illusion of grandeur.

Embrace cross ventilation at Keystone Seasons

Rooms that *make more room for your life.*

50

*Ample Sunlight.
Cross-ventilation.*

The already spacious living room appears even larger and feels brighter and fresher thanks to the clever design.



Not just premium, *but practical.*

*Generously sized balconies.
Intelligently planned spaces.*

Everybody could benefit with a little time outdoors. That's why we allocated a significant space to balconies, allowing them to stretch along two sides of the apartments, to cover every room, including the living and dining area.

Beyond their generous dimensions, these balconies are designed with practicality in mind as is evident in the inclusion of strategically placed water points and drains, that make it easier to tend to plants, utilize appliances and even accommodate dining under the stars.



Balcony area with drain points and electrical outlets

More Sunlight To Help You *Sleep Better*

*Paradoxical as it may sound,
sunlight does help a person sleep better.
That's why we designed our homes
uniquely, to invite more sunlight.*

Sunlight for your well-being.

1. Improves your mood by boosting serotonin, the body's natural mood stabilizer.
2. Stimulates Vitamin D production in the body, essential for healthy bones and teeth.
3. Improves focus and cognitive functions, helping you be more productive.
4. Reduces energy consumption and costs.
5. Helps you forge a connection with nature, creating a sense of belonging.
6. Improves emotional well-being by regulating the body's sleep-wake cycle.
7. Creates the illusion of space, making you feel freer.

Master Bedroom 1





Master Bedroom 2

Kids' Bedroom

Kids will grow,
*so will their
happiness.*





Guest Rooms

Give your
guests *a
taste of
wellness.*

Stylish and cozy rooms

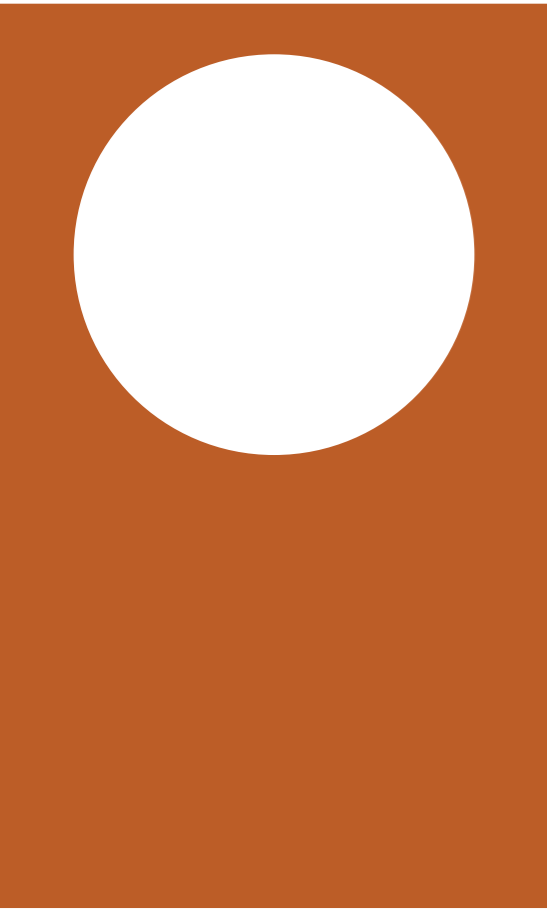
Kitchen

*Feed your soul,
not just
your body.*

Let your culinary explorations run free in a modular kitchen* designed to make designing your meals a delight.

*Optional



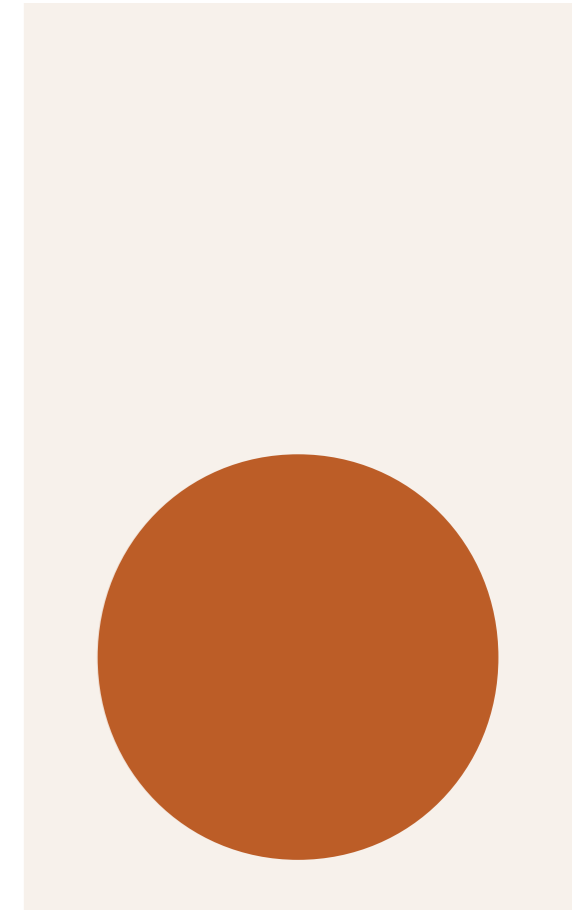


Keep your
privacy,
private.

*No common
walls between
apartments.*

Safeguard the sanctity of your home with no common walls and a discreet layout that accommodates dedicated services balconies and separate entrances.

Furthermore, the strategic positioning of service areas ensures that the service balconies do not overlook the guest areas of adjacent apartments.





Private Study Area

68

Work. And Worship.

*Make room for the
things that drive you.*



Serene Puja Area



Large bathing areas



Appealing Aesthetics

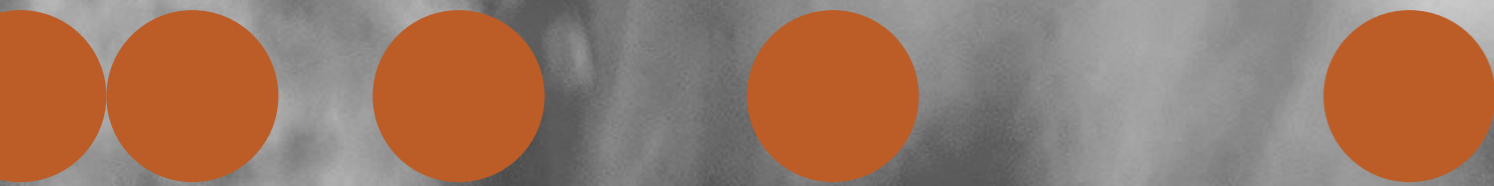
Bathrooms

Your Private Sanctuary.

TERRACE

Expect the
impossible,
*never just
the expected.*

Clever innovative
terrace with lounge,
kids play area
and walking track.





74

75

THE TERRACE

An Elevated Oasis

Innovative Design. Non-cluttered Terrace.

Crowning the top of the towers, this exquisitely landscaped terrace, set against the backdrop of the Aravalli Hills, transforms an otherwise never used space it into a vibrant hub for relaxation and social gatherings.

This innovation, a first in Gurgaon, optimizes every inch of space. Unlike most terraces that are cluttered with pipelines and electrical services, here, all utilities are ingeniously routed below this level through a service floor, keeping the terrace clear for leisure activities. This intelligent design also shields the apartments from direct sunlight and potential leakages.



Scenic evenings at the Terrace Lounge.

Terrace Lounge

A Lounge *with a View*

An in-house terrace lounge offers a unique opportunity for residents to socialise and bond with each other. Pre-book the lounge to host cozy celebrations set against the backdrop of Gurgaon's scenic skyline or make the most of chilly winters with an outdoor barbecue. Your imagination is all it takes to transform this space.

Recharge *on top* *of the world*

Take your morning walks to the next level. Literally. This open, airy, uninterrupted space fitted with a walking track allows you all the space you need to exercise, relax or just be by yourself.



Walk, exercise, relax at the Terrace Walking Track.



Kids Play Area



CLUBHOUSE

Where Life's Best Moments *Flourish*



B

BASEMENT

- Badminton / Squash Play Area

LG

LOWER
GROUND FLOOR

- Banquet Hall with Pre-function
- Banquet Lawns
- Kitchen and Utensils Wash Area

G

GROUND
FLOOR

- Gym
- Theatre Area
- Multipurpose/Yoga Room
- Spa
- Change Rooms
- Salon

Triple-level Clubhouse



Zen-like Clubhouse

Designed to be the hub of activity, the clubhouse cleverly balances power-packed moments with serenity through its innovative design.

Inspired by Zen minimalism, the whole space centers on simplicity and the profound beauty of empty spaces. Brought to life through landscape ramps that harmoniously integrate the building with its surroundings.

What you get is a tranquil sanctuary that houses the potential for powerful connections.



View of the club to the building

*Escape without ever
having to leave home.*

Stepped amphitheatre-like landscaped terraces overlook the pool making it a quaint spot for morning yoga, meditation, group activities, performances and celebrations.

Positivity
with every
ray



V A S T U



A place
to thrive

EMOTIONAL,
PHYSICAL,
SPIRITUAL
BALANCE

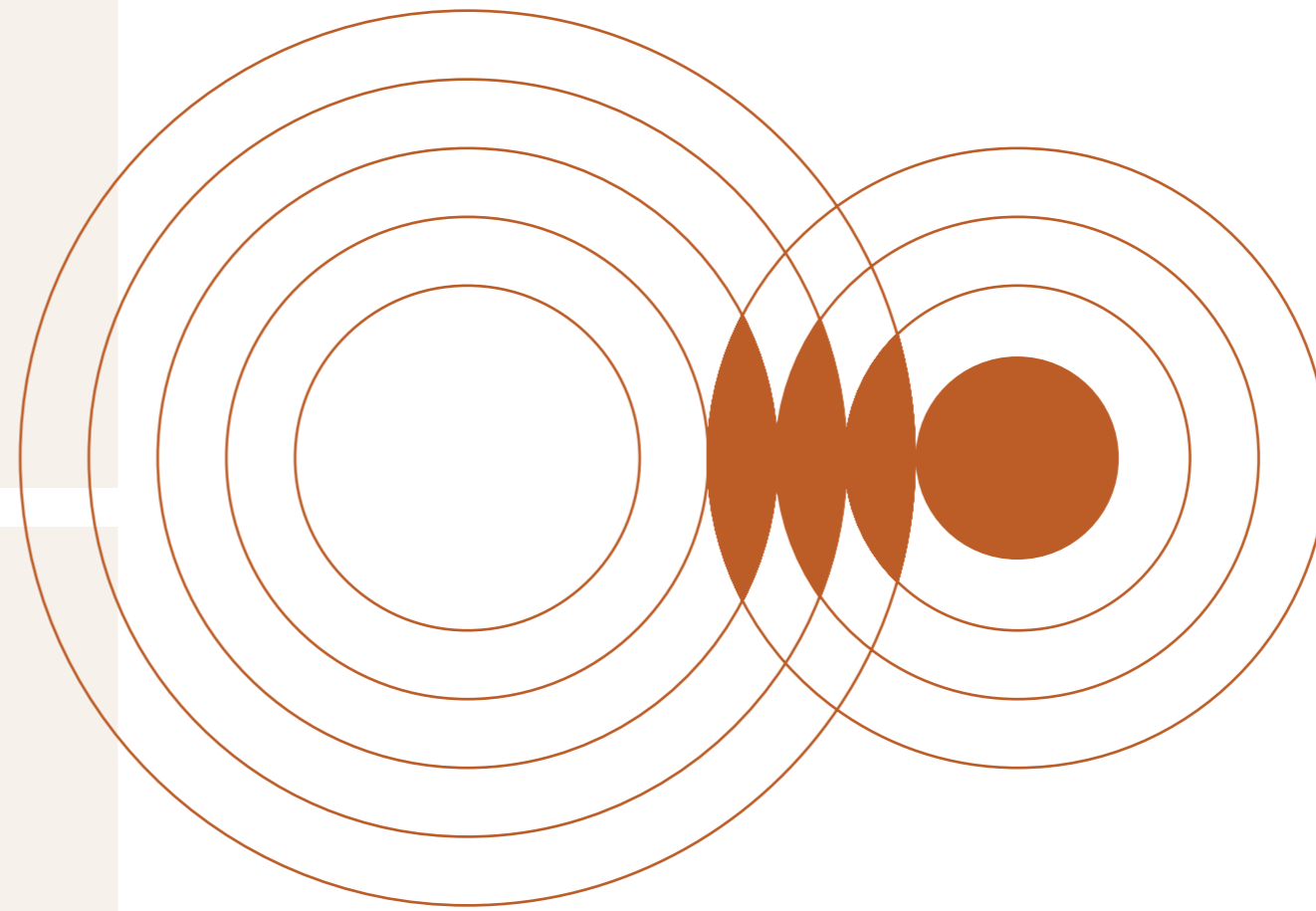


M O T H E R
N A T U R E



E N E R G Y

F L O W



*Ripples of
well-being*



Extending a warm welcome is an *art*.

A parametric layered bespoke reception counter adorns the entrance of the Clubhouse, breathing modernity and art into this space.

Parametric layered bespoke reception counter



Entrance Foyer

An artist's impression

Ikebana floral arrangements complemented with refreshing artwork

Metal and glass pivot screens create an artistic walkthrough that is complemented by a graceful artwork of a gust of wind, creating the illusion of breeze.

This is balanced carefully by an Ikebana arrangement at the far end.



Party Indoors or Outdoors.

A double-height banquet hall, elegantly paired with a garden, creates a unique venue for celebrations and events. This majestic space is further enhanced by its expansive banquet lawns, that separate from the banquet and pre-function areas.

This harmonious blend of indoor luxury and outdoor serenity, offers a versatile backdrop for any occasion.

Twilight at the Clubhouse



Grand chandeliers adorn the pre-function area

Pre-function Area

An unforgettable first glimpse

A sign of things to come, the Pre-function area replete with classy crystal chandeliers, is designed to awe.

Elegant banquet set-up



Banquet Hall

*A touch of
sophistication*

The banquet hall, boasts rich interiors and ambient lighting, offering a luxurious space for banquets and parties.



Stretch your mind,
body, *along with your*
imagination.

Woven fabric walled interiors

Designed for yoga, but destined for greater things, this multi-purpose space can be used for group activities and functions. The woven fabric wall doubles up as an acoustic enhancer while lending craft to the elegant interiors.



Gym

Get your daily dose of adrenaline at this intelligently equipped gym.



Luxurious ambient lighting salon

Salon

A little pampering, goes a long way.

Comfortable, calm and luxurious, the salon provides a space for you to truly let your hair down. Hair styling, pedicure or manicure, whatever your beauty desire, you can be sure to find it all here.

Unwind in this rock cut cave with subdued lighting for a spa experience in the steam, sauna or whirlpool.



Wet Spa

*Sometimes
doing nothing
is all you need to do.*



Partake in an impromptu karaoke night, celebrate birthdays or cheer for your favourite sports team at this mini-theatre.



Theatre Area

*The luxury of
private screenings.*

Large seats for comfortable viewings

LANDSCAPE

Soak in lush,
never just luxe.

*15% Built-up Area.
100% Open Spaces.*



100% Concern. 0% Compromise.



Landscape aerial view featuring greenery all around.

With built areas occupying a mere 15% of the total land, Keystone Seasons offers an impressive 100% open green space, setting a new standard of openness in Gurgaon.

This approach, unlike cosmetic landscapes, allows for the natural growth of large trees and facilitates rainwater percolation, effectively reducing the heat island effect. Additionally, the project boasts three rainwater harvesting systems to further enhance groundwater recharge, reinforcing the project's commitment to preserving nature and promoting sustainable living.

114

Let children
run wild, *never*
your mind.

90% Vehicle-free areas. More safety.

115

Significant allocation of vehicle-free zones ensures that kids, the elderly and the differently-abled can move about independently.

Designed to be more than an aesthetic installation, the gently sound of water, dancing under the open sky, calms and soothes the mind.



Landscape aerial view of the enthralling water dances.

Envelope yourself in greenery.

118



Lush Lawns

119



Refreshingly natural outdoor seating



Outdoor amphitheater

Amphitheater

The stepped amphitheater-like landscaped terraces at Keystone Seasons provide an innovative approach to green spaces, with the elevated design extending over the clubhouse. Residents can enjoy the unique feature, which offers a picturesque setting for small gatherings or tranquil moments of relaxation.



Swim, soak, splash with 6 whirlpools

Pool with 6 Whirlpools

Awaken your body

Relax and rejuvenate with six Jacuzzi/whirlpool points inside the pool, accompanied by a kids' pool for the little ones.

Tennis Court

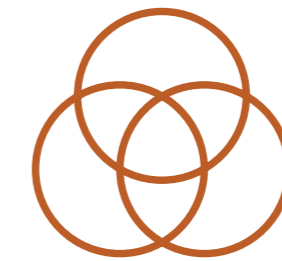


Half Basketball Court

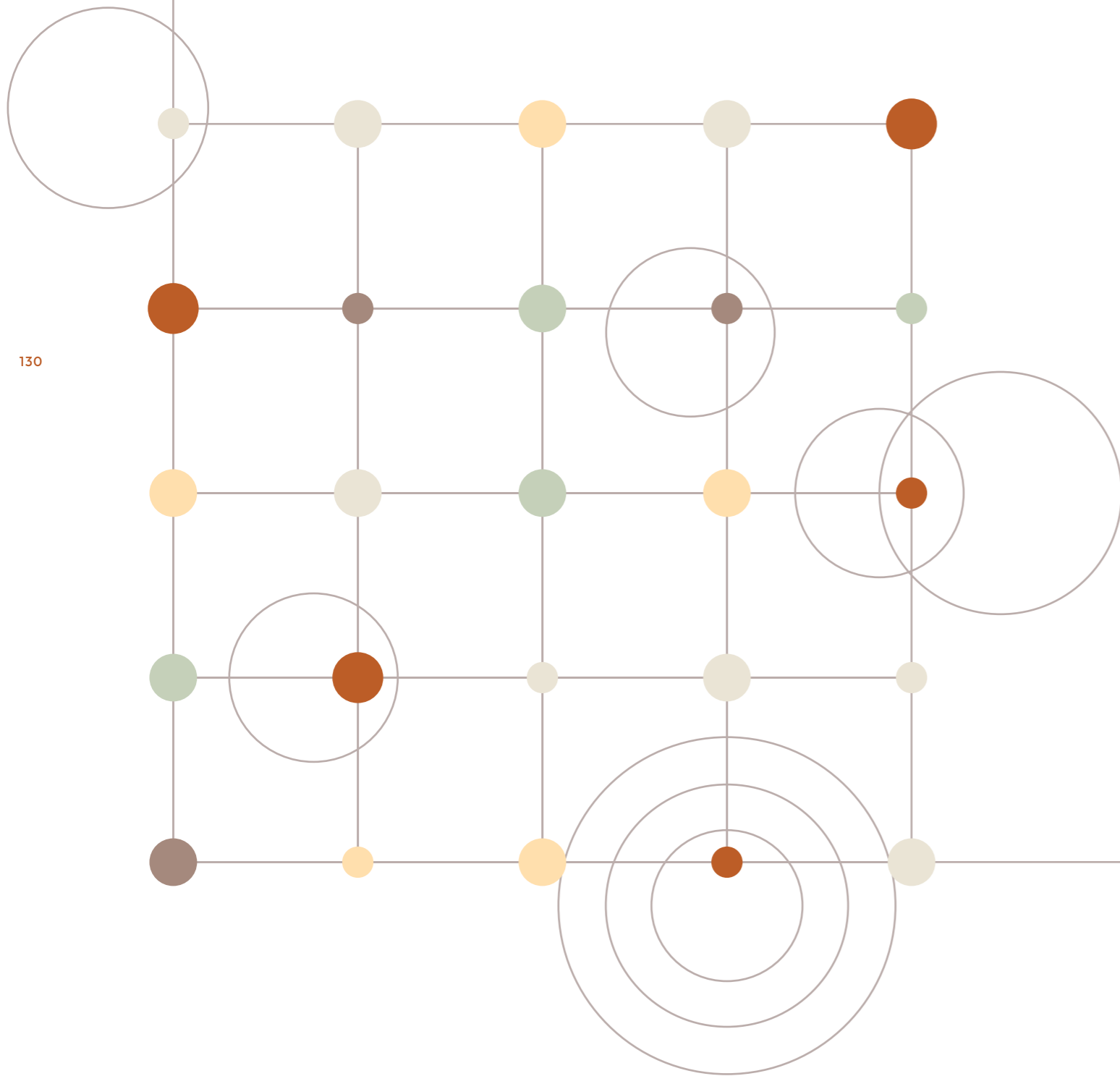


Vedic Temple

Connect with yourself at this spiritual sanctuary that offers residents a place of solace and peace.



An ancient
Vedic temple for
*modern-day
spirituality*



130

131

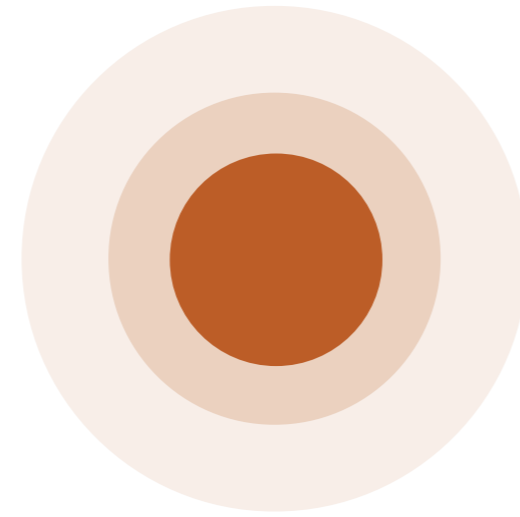
*Saves the world
while saving costs.*
IGBC Gold Rated
Green Building.

Apart from the environmental and health benefits you can enjoy at this Green Building, our Gold-rating also contributes to lower utility costs and reduced maintenance costs.

Keystone

Keystone was incorporated in 2019 by its Founder & CEO Vaibhav Tapdiya, who stands out with a rich tapestry of achievements in the realm of Real Estate Development and Hospitality. His journey from 2004 to 2018 with different business groups is marked by an instrumental role as Director and Shareholder in a series of award-winning landmark projects, renowned for their completion within record time and adherence to the highest international quality standards. In 2019, he embarked on a new venture, founding 'Keystone', a customer-centric Real Estate Brand that has since been developing noteworthy projects across the National Capital Region (NCR) and Maharashtra.

A Chartered Accountant and MBA by qualification, Vaibhav has a profound love for numbers and an even deeper passion for interpreting them within their relevant contexts. His professional ethos is rooted in Keystone and is a simple, yet powerful philosophy which is to understand the customer first. This approach has consistently given his projects a competitive edge, fostering remarkable growth and setting new benchmarks in the industry.



Here are a few of the remarkable projects where Vaibhav Tapdiya has played an instrumental role as director and shareholder/member:

Time Residency, Gurugram



134

Time Tower, Gurugram



Taj Damdama, Gurugram



Time Center, Gurugram



135

Disclaimer: Project images, names and brands, are mentioned solely to highlight Mr. Vaibhav Tapdiya's contributions. All intellectual property rights are acknowledged and respected and no rights are claimed in intellectual property.

Rajeev Agarwal Architects

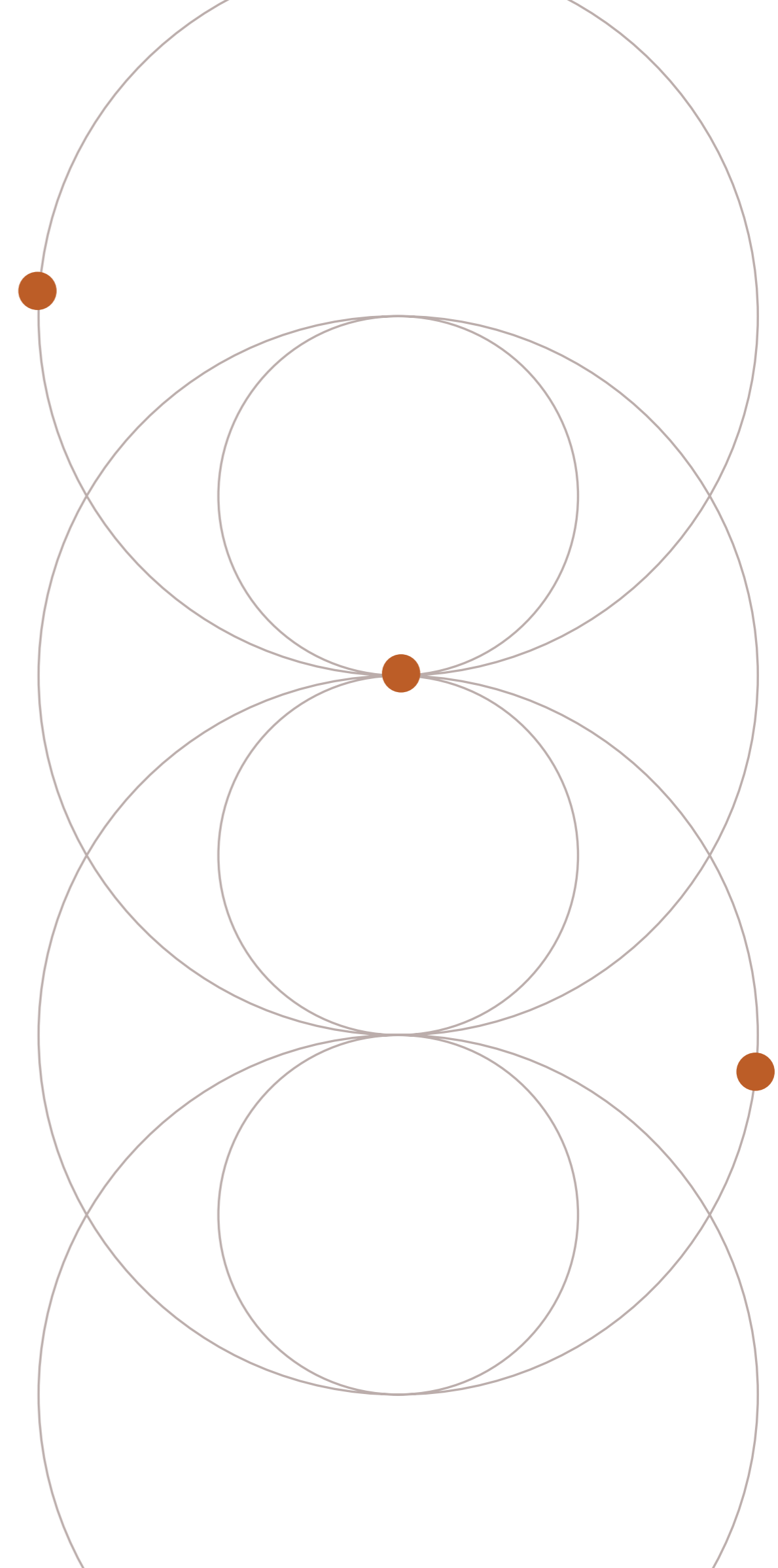


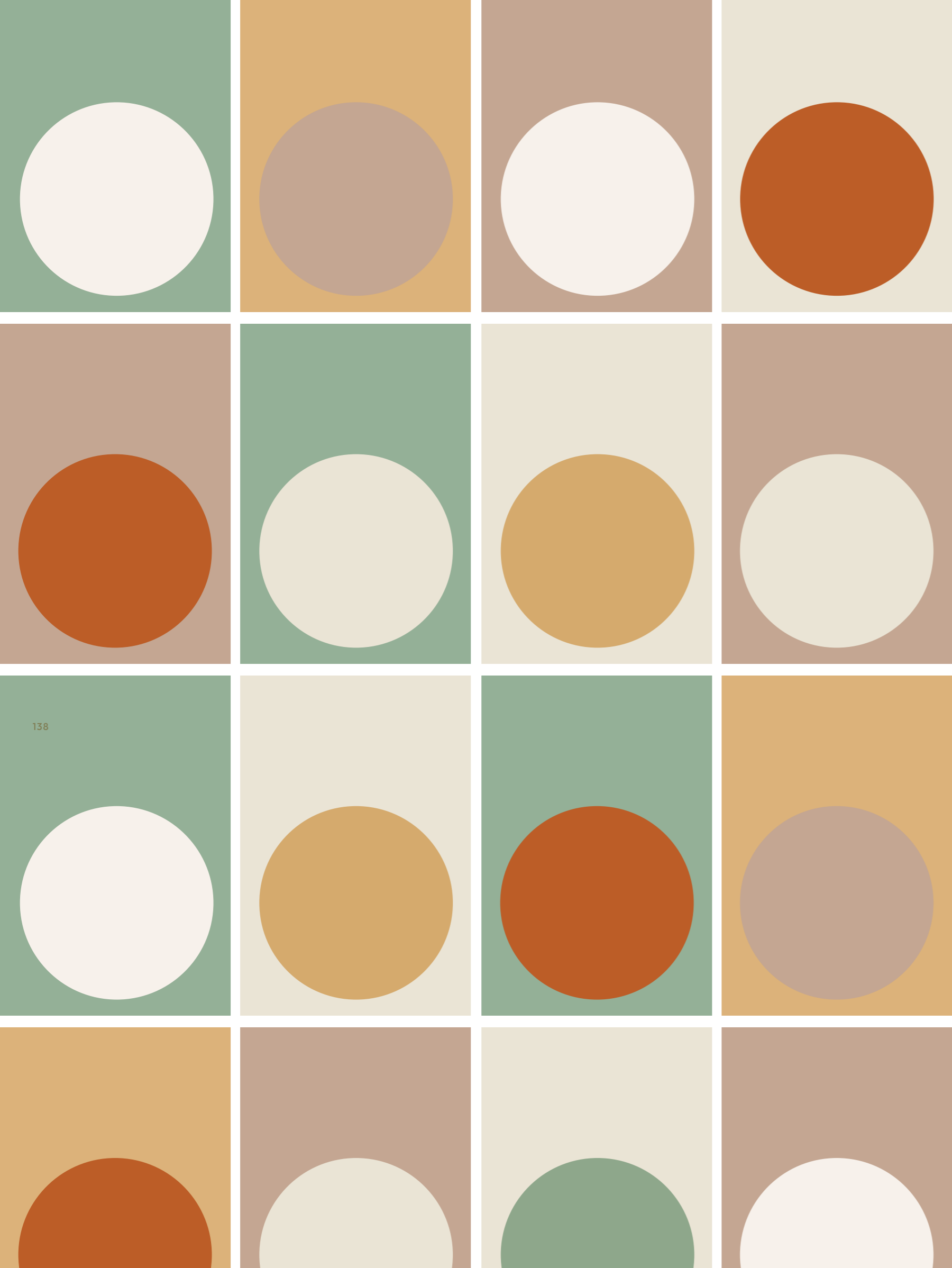
Rajeev Agarwal Architects is an architectural design studio in New Delhi. They have worked on a range of projects including residential, hospitality, commercial and institutional buildings in over 30 years. Each project is treated as a special design to create a unique built environment which is in harmony with nature. They have won many national and international awards and been extensively published in various professional journals. Their projects seamlessly integrate all aspects of built environment – architecture, interior spaces and external landscape informed with a rigorous attention to the engineering details to create robust buildings.

Oracles



If there's one word that defines Oracles, it's conscientious. A progressive Architecture and Landscape Consultancy Service, that celebrates design as a source of delight and a means to craft sensory experiences in life and its environment. With sound guiding principles and extensive design experience, under the leadership of Founder and Principal, Suneet Mohindru, Oracles has conceptualized and delivered projects in the domains of residential, hospitality, business, commerce, culture, transportation and the public realm. What you'll notice across all their creations is how they seamlessly integrate nature creatively into arenas of human activity, allowing built and open spaces to diffuse into one another, to create a unified space.



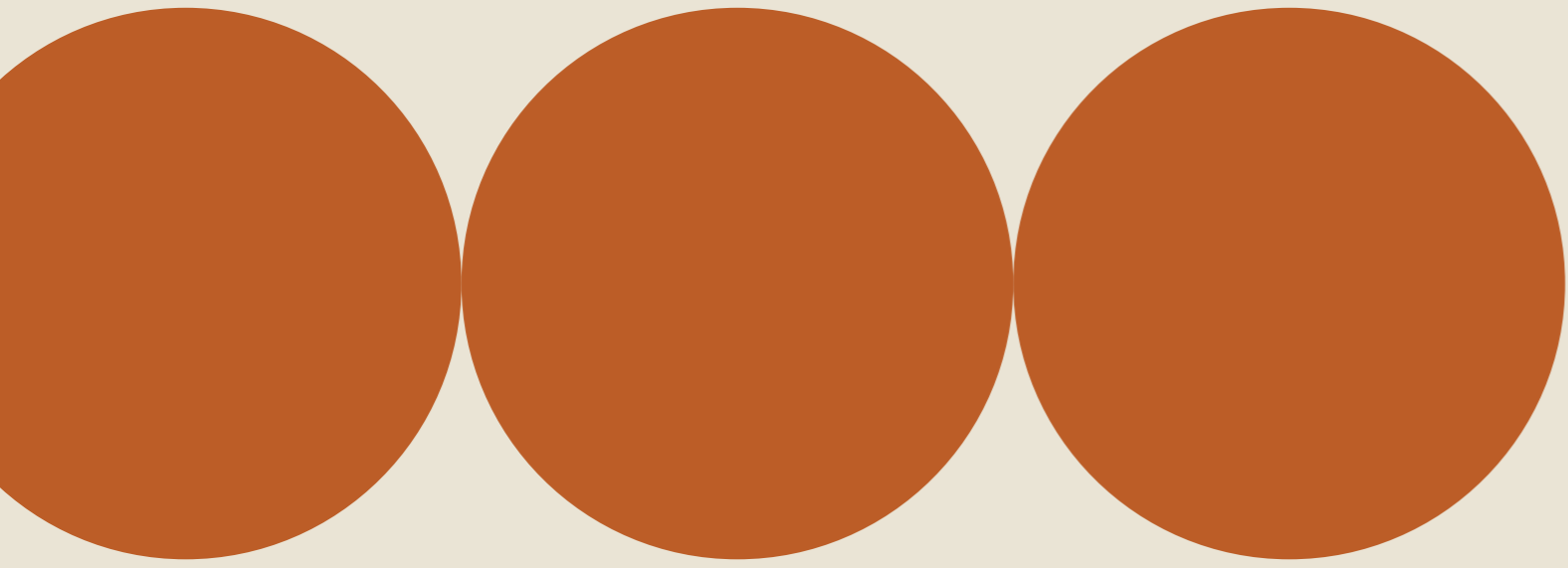


*Breathe.
Balance.
Belong.*

Specifications

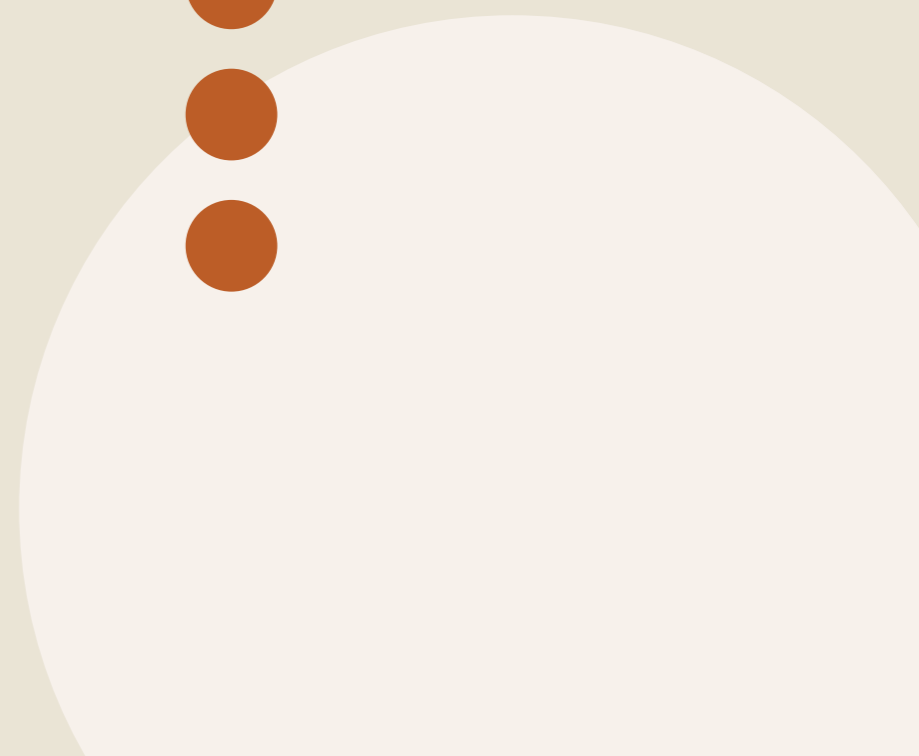
DESCRIPTION	LOCATION	SPECIFICATION	BRAND
<i>Flooring</i>	Living / Dining Room / Entrance Lobby	Imported Marble / Tile / Laminated Flooring As Per Theme Selected	Imported Marble, Action Tesa, Pergo or equivalent / Kajaria, Somany, Johnson, or Equivalent
	All Bed Rooms	Grade (AC-3), 8mm thick Laminated Wooden Flooring / 800 x 800 mm Premium Quality Vitrified Tiles	Action Tesa, Pergo or equivalent / Kajaria, Somany, Johnson, or Equivalent
	Master Bedroom	Grade (AC-3), 8mm thick Laminated Wooden Flooring	Action Tesa, Pergo or equivalent
	All Toilets	300 / 600 x 600 mm Premium quality Anti Skid Vitrified / Ceramic tiles	Kajaria, Somany, Johnson, Orient Bell or Equivalent
	Utility Room	600 x 600 mm Ceramic / Vitrified Tiles	
	Utility Room Toilet	300 x 600 mm / 300 x 300 mm Premium quality Ceramic Tiles	
	Kitchen	800 x 800 mm Premium Quality Vitrified Tiles	
	Balcony	200 x 1200 mm Premium Quality Anti Skid Ceramic Tiles	Restile, Johnson, Kajaria or Equivalent
	Staircase	Staircase Tile	
<i>Walls/Ceiling</i>	Living / Dining Room	POP Punning / Cornice / Low VOC Plastic Emulsion Paint	Sakarni / Asian, Berger, Nerolac, Dulux or Equivalent
	All Rooms	POP Punning / Low VOC Plastic Emulsion Paint	
	All Toilets	300 / 600 x 600 mm Premium quality Vitrified / Ceramic Tiles Till False Ceiling	Kajaria, Somany, Johnson, Orient Bell or Equivalent
	Utility Room Toilet	300 x 600 mm / 200 x 300 mm Premium quality Ceramic Tiles Till False Ceiling	
	Kitchen	300 x 600 mm Premium quality Tiles above counter and below OH	
	All Toilets	600 x 600 Water Resistant Grid Ceiling	Armstrong, USG Boral, Everest or Equivalent
	Balcony	Partly Textured / Weather Shield / Weather Coat or equivalent, as per IGBC	Asian, Berger, Nerolac, Dulux or Equivalent
	Staircase	Putty / Low VOC Plastic Emulsion Paint	JK Birla or Equivalent / Asian, Berger, Nerolac, Dulux or Equivalent
<i>Doors</i>	Main Door	Teakwood Door with Hardwood Frame - 2.4m Ht	-
	All Internal Doors	Hardwood Frame with Laminated / Veneered Flush Door - 2.4 m Ht	-
	Staircase Door	2 Hrs Fire Rated Door	-
	Door Hardware	SS 304 Hardware. Video Door Phone with Digital Lock on Main Door	Dorset, Godrej, Kich, Ozone or Equivalent

DESCRIPTION	LOCATION	SPECIFICATION	BRAND
<i>Electrical</i>	All Rooms	Premium Quality Moulded Moduler Switches & Sockets	ABB, L&T, C&S, Schnider or Equivalent
	All Rooms	Fire Resistant Copper Wiring	Havells, Polycab, KEI or Equivalent
	Rooms	TV & Telephone Points through WI-FI in Rooms except Kitchen & Utility	-
	Rooms	Split AC as per IGBC in Rooms, Provision in Kitchen & Utility	Hitachi, IFB, Voltas or Equivalent
	All Toilets Except Utility	Geysers	Racold, Jaquar, Havells or Equivalent
	All Toilets & Kitchen	Exhaust Fan	Havells, Bajaj, Crompton Greaves or Equivalent
	Staircase	Light Fixtures as per IGBC	Havells, Bajaj, Syska, HPL or Equivalent
	Power Connection	33 KVA Connection	-
	Power Backup	6 KW for 3 BHK and 8KW for 4 BHK	-
<i>Fittings & Fixtures</i>	All Toilets	Wall Hung WC, Above counter Wash Basin, CP Fittings as per IGBC	Kohler, Grohe, Roca or Equivalent
	All Toilets	Mirror with Smooth Light	-
	Kitchen (Modular)- Optional As Per Respective BBA	"Built-In Hob, Chimney, Oven, Microwave, Dishwasher, RO, SS Sink Double Bowl with drain board, CP Fittings as per IGBC"	Reputed Makes
Utility	SS Sink Single Bowl, CP Fittings as per IGBC	Jayna, Nirali, Franke or Equivalent / Kohler, Grohe, Roca or Equivalent	
<i>Counter/Vanity/Shower Cubicle</i>	All Toilets	Marble or Granite Stone / MDF with Laminate / Toughened Glass with SS Fittings	-
<i>External Doors & Windows</i>	All External Doors	3 Track uPVC frame with Low-e Toughened glass as per IGBC	-
<i>External Paint</i>	All External Surface	Partly Textured / Weather Shield / Weather Coat or equivalent, as per IGBC	Asian, Berger, Nerolac, Dulux or Equivalent
<i>Railing</i>	Balcony / Staircase	MS Railing	-
<i>Miscellaneous</i>	All Rooms / Kitchen	Smoke Detectors / Heat Detectors	-
	Kitchen	Gas Pipeline (Internal)	-
	Apartment	Intercom - Arrangement with operator	-
	Common Areas	CCTV in Common Areas	-
<i>Sustainability</i>	-	Solar on Roof Top	-
	-	Rain-water Harvesting	-
<i>Internet</i>	-	Wi-Fi in Public Spaces	-
	-	Boosters in Basements	-



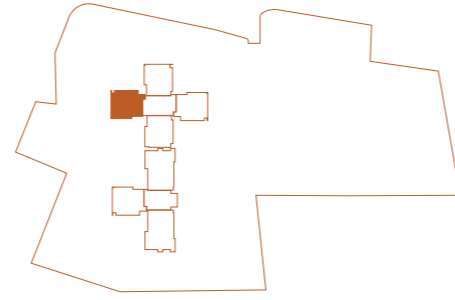
F L O O R P L A N S

Planned to *Floor* you



3 BHK

Sun Tower Unit 1



- 1**
Foyer
3'6" x 5'1"
- 2**
Living/Dining
20'0" x 13'6"
- 3**
Corridor
3'6" x 12'1"
- 4**
Kids' Bedroom
10'6" x 14'8"(12'11")
- 5**
Master Bedroom 1
10'10"x 14'0"
- 6**
Foyer
4'9" x 5'9"
- 7**
Toilet
5'6" x 9'0"
- 8**
Master Bedroom 2
10'10" x 12'3"
- 9**
Toilet
5'6" x 8'6"
- 10**
Toilet
5'6" x 8'6"
- 11**
Study
6'0" x 5'9"
- 12**
W.C.
3'3" x 4'0"
- 13**
Kitchen
8'6" x 10'0"
- 14**
Balcony
14'8" x 5'11"
- 15**
Balcony
28'8" x 5'11"
- 16**
Balcony
33'6" x 5'11"

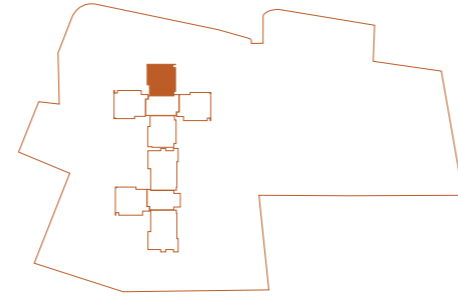
	Sq. Mtr.	Sq. Ft.
Carpet area (As per RERA)	106.17	1,143
External wall area	12.54	135
Balcony area	40.13	432
Total Usable Area/ Built-up area	158.84	1,710
Super area	211.82	2,280



Disclaimer: Plans not to scale. Images are for illustrative and indicative purposes only. Furniture layout and furnishings are for illustrative and indicative purposes only

3 BHK

Sun Tower Unit 2



- 1**
Foyer
3'6" x 5'1"
- 2**
Living/Dining
13'6" x 20'0"
- 3**
Corridor
3'6" x 12'1"
- 4**
Kids' Bedroom
14'8"(12'11") x 10'6"
- 5**
Master Bedroom 1
14'0" x 10'10"
- 6**
Foyer
4'9" x 5'9"
- 7**
Toilet
9'0" x 5'6"
- 8**
Master Bedroom 2
12'3" x 10'10"
- 9**
Toilet
8'6" x 5'6"
- 10**
Toilet
8'6" x 5'6"
- 11**
Study
5'9" x 6'0"
- 12**
W.C.
4'0" x 3'3"
- 13**
Kitchen
10'0" x 8'6"
- 14**
Balcony
5'11" x 14'8"
- 15**
Balcony
5'11" x 28'8"
- 16**
Balcony
5'11" x 33'6"

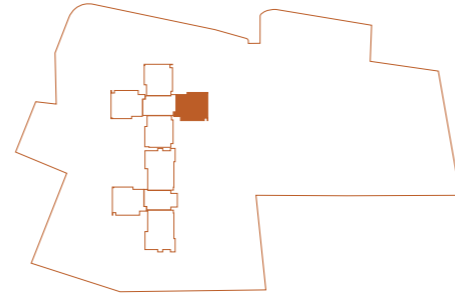
	Sq. Mtr.	Sq. Ft.
Carpet area (As per RERA)	106.17	1,143
External wall area	12.54	135
Balcony area	40.13	432
Total Usable Area/ Built-up area	158.84	1,710
Super area	211.82	2,280



Disclaimer: Plans not to scale. Images are for illustrative and indicative purposes only. Furniture layout and furnishings are for illustrative and indicative purposes only

3 BHK

Sun Tower Unit 3



- 1**
Foyer
3'6" x 5'1"
- 2**
Living/Dining
20'0" x 13'6"
- 3**
Corridor
3'6" x 12'1"
- 4**
Kids' Bedroom
10'6" x 14'8"(12'11")
- 5**
Master Bedroom 1
10'10" x 14'0"
- 6**
Foyer
4'9" x 5'9"
- 7**
Toilet
5'6" x 9'0"
- 8**
Master Bedroom 2
10'10" x 12'3"
- 9**
Toilet
5'6" x 8'6"
- 10**
Toilet
8'6" x 5'6"
- 11**
Study
6'0" x 5'9"
- 12**
W.C.
3'3" x 4'0"
- 13**
Kitchen
8'6" x 10'0"
- 14**
Balcony
14'8" x 5'11"
- 15**
Balcony
28'8" x 5'11"
- 16**
Balcony
33'6" x 5'11"

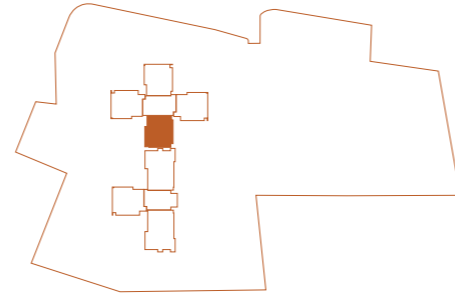
	Sq. Mtr.	Sq. Ft.
Carpent area (As per RERA)	106.17	1,143
External wall area	12.54	135
Balcony area	40.13	432
Total Usable Area/ Built-up area	158.84	1,710
Super area	211.82	2,280



Disclaimer: Plans not to scale. Images are for illustrative and indicative purposes only. Furniture layout and furnishings are for illustrative and indicative purposes only

3 BHK

Sun Tower Unit 4



- 1**
Foyer
3'6" x 5'1"
- 2**
Living/Dining
13'6" x 20'0"
- 3**
Corridor
3'6" x 12'1"
- 4**
Kids' Bedroom
14'8"(12'11") x 10'6"
- 5**
Master Bedroom 1
14'0" x 10'10"
- 6**
Foyer
4'9" x 5'9"
- 7**
Toilet
9'0" x 5'6"
- 8**
Master Bedroom 2
12'3" x 10'10"
- 9**
Toilet
8'6" x 5'6"
- 10**
Toilet
8'6" x 5'6"
- 11**
Study
5'9" x 6'0"
- 12**
W.C.
4'0" x 3'3"
- 13**
Kitchen
10'0" x 8'6"
- 14**
Balcony
5'11" x 14'8"
- 15**
Balcony
5'11" x 28'8"
- 16**
Balcony
5'11" x 33'6"

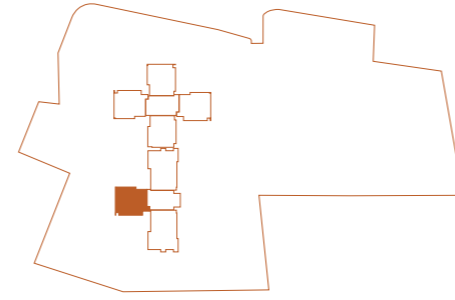
	Sq. Mtr.	Sq. Ft.
Carpets area (As per RERA)	106.17	1,143
External wall area	12.54	135
Balcony area	40.13	432
Total Usable Area/ Built-up area	158.84	1,710
Super area	211.82	2,280



Disclaimer: Plans not to scale. Images are for illustrative and indicative purposes only. Furniture layout and furnishings are for illustrative and indicative purposes only

3 BHK

Earth Tower Unit 1



- 1**
Foyer
3'6" x 5'1"
- 2**
Living/Dining
20'0" x 13'6"
- 3**
Corridor
3'6" x 12'1"
- 4**
Kids' Bedroom
10'6" x 14'8"(12'11")
- 5**
Master Bedroom 1
10'10"x 14'0"
- 6**
Foyer
4'9" x 5'9"
- 7**
Toilet
5'6" x 9'0"
- 8**
Master Bedroom 2
10'10" x 12'3"
- 9**
Toilet
5'6" x 8'6"
- 10**
Toilet
5'6" x 8'6"
- 11**
Study
6'0" x 5'9"
- 12**
W.C.
3'3" x 4'0"
- 13**
Kitchen
8'6" x 10'0"
- 14**
Balcony
14'8" x 5'11"
- 15**
Balcony
28'8" x 5'11"
- 16**
Balcony
33'6" x 5'11"

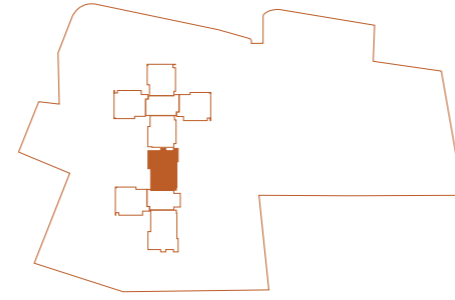
	Sq. Mtr.	Sq. Ft.
Carpent area (As per RERA)	106.17	1,143
External wall area	12.54	135
Balcony area	40.13	432
Total Usable Area/ Built-up area	158.84	1,710
Super area	211.82	2,280



Disclaimer: Plans not to scale. Images are for illustrative and indicative purposes only. Furniture layout and furnishings are for illustrative and indicative purposes only

4 BHK

Earth Tower Unit 2



- 1**
Corridor 1
4'6" x 16'11"
- 2**
Living Area
13'6" x 15'9"
- 3**
Dining Area
10'3" x 10'0"
- 4**
Pooja Room
4'3" x 1'6"
- 5**
Corridor 2
3'6" x 11'2"
- 6**
Master Bedroom 1
14'0" x 10'6"
- 7**
Toilet
8'6" x 5'6"
- 8**
Kids' Bedroom
12'0" x 10'0"
- 9**
Kids' Bedroom Foyer
5'9" x 5'4"
- 10**
Toilet
5'6" x 8'0"
- 11**
Master Bedroom 2
11'0" x 14'6"
- 12**
Toilet
9'9" x 6'5"
- 13**
Dress
5'5" x 6'5"
- 14**
Guest Bedroom
12'0" x 10'6"
- 15**
Toilet
8'9" x 5'6"
- 16**
Kitchen
10'0" x 10'0"
- 17**
Study Room
5'9" x 6'9"
- 18**
W.C.
4'0" x 3'7"
- 19**
Service Balcony
5'11" x 16'11"
- 20**
Balcony
5'11" x 13'0"
- 21**
Balcony
5'11" x 25'5"
- 22**
Balcony
5'11" x 18'4"
- 23**
Balcony
5'11" x 18'0"
- 24**
Balcony
2'8" x 9'5"

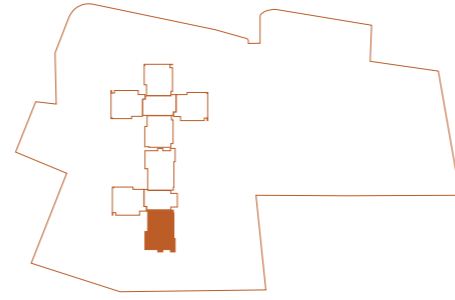
	Sq. Mtr.	Sq. Ft.
Carpet area (As per RERA)	139.13	1498
External wall area	15.07	162
Balcony area	52.89	569
Total Usable Area/ Built-up area	207.09	2229
Super area	276.12	2972



Disclaimer: Plans not to scale. Images are for illustrative and indicative purposes only. Furniture layout and furnishings are for illustrative and indicative purposes only

4 BHK

Earth Tower Unit 3



- 1**
Corridor 1
4'6" x 16'11"
- 2**
Living Area
13'6" x 15'9"
- 3**
Dining Area
10'3" x 10'0"
- 4**
Pooja Room
4'3" x 1'6"
- 5**
Corridor 2
3'6" x 11'2"
- 6**
Master Bedroom 1
14'0" x 10'6"
- 7**
Toilet
8'6" x 5'6"
- 8**
Kids' Bedroom
12'0" x 10'0"
- 9**
Kids' Bedroom Foyer
5'9" x 5'4"
- 10**
Toilet
5'6" x 8'0"
- 11**
Master Bedroom 2
11'0" x 14'6"
- 12**
Toilet
9'9" x 6'5"
- 13**
Dress
5'5" x 6'5"
- 14**
Guest Bedroom
12'0" x 10'6"
- 15**
Toilet
8'9" x 5'6"
- 16**
Kitchen
10'0" x 10'0"
- 17**
Study Room
5'9" x 6'9"
- 18**
W.C.
4'0" x 3'7"
- 19**
Service Balcony
5'11" x 16'11"
- 20**
Balcony
5'11" x 13'0"
- 21**
Balcony
5'11" x 25'5"
- 22**
Balcony
5'11" x 18'4"
- 23**
Balcony
5'11" x 18'0"
- 24**
Balcony
2'8" x 9'5"

	Sq. Mtr.	Sq. Ft.
Carpet area (As per RERA)	139.13	1498
External wall area	15.07	162
Balcony area	52.89	569
Total Usable Area/ Built-up area	207.09	2229
Super area	276.12	2972



Disclaimer: Plans not to scale. Images are for illustrative and indicative purposes only. Furniture layout and furnishings are for illustrative and indicative purposes only

Don't
just live.
Thrive.



KEYSTONE
SEASONS

SECTOR 77, GURUGRAM

Registered Office: A 130, FF, Neeti Bagh, Mahendrakumar Jain Marg, New Delhi 110049

Corporate Office: KEYSTONE, 504, Wing A (Front), MVL i Park, Sec 15 II, Chandan Nagar, Gurgaon 122001

License No: 67 of 2011

BIP No: LC-2384-JE(SB)-2023 / 39286 dated 16-11-2023

Contact: **EMAIL** seasons@keystone.work **CELL** 93551 22445 **LANDLINE** 0124-4003999 / 4073999

RERA No: RC / REP / HARERA / GGM / 823 / 555 / 2024 / 50 dated: 03-05-2024

Disclaimers: All information, images and visuals, drawings, plans or sketches shown in this brochure are only an architect's impression, for representational/illustrative purposes only and not to scale. The Promoter is not liable/ required to provide any Interior works, furniture, items, electronics goods, amenities, accessories, etc, as displayed herein as the same do not form part of the specifications or deliverables being offered by the Promoter and the same shown herein is only for the purpose of illustrating/indicating a possible layout. Nothing contained herein intends to constitute a legal offer and does not form part of any legally binding agreement and/or commitment of any nature. The Promoter endeavours to keep the information up to date and correct, however, makes no representation or warranty for the accuracy or completeness of the information. Recipients/ viewers are advised to exercise their discretion in relying on the information shown/ provided and are requested to verify all the details, including area, amenities, services, terms of sales and payments and other relevant terms independently with the Sales Team/ Promoter, have a thorough understanding of the same and take appropriate advice before concluding any decision for buying any Unit(s) in the Project. All dimensions mentioned in the drawings may vary/differ as compared to original at site. All specifications and amenities mentioned herein are actual specifications, amenities and facilities provided by the Company as per approved plans. **Specifications given are as filed with HRERA, Gurugram. The extent/ number/variety of the equipment/appliances are tentative and liable to change at sole discretion of the Promoter and shall be as per applicable law. Some of the features shown are optional. *Taxes and statutory charges extra as applicable and terms and conditions apply.